

### AFFORDABLE & SIMPLE SET UP INSTALLATIONS

Today's market calls for availability not limitations on every level of glass, hardware and design. With that in mind, Glaz-Tech Industries introduces **Alumax Bath Enclosures**. Glaz-Tech's integrated fabrication capabilities, alongside with Alumax's dynamic product line, gives you far more options for basic or highly complex designed enclosures. A shower enclosure's elegant presentation says a lot about the craftsmanship and the owner. Go with a certified distributor that fabricates quality product and provides endless ideas for even the simplest bath enclosure.



Frameless Heavy Glass Slider

Image(s) courtesy of Alumax Bath Enclosures



Image(s) courtesy of Alumax Bath Enclosures

CLASSIC SERIES



Image(s) courtesy of Alumax Bath Enclosures

DESIGNER SERIES



Image(s) courtesy of Alumax Bath Enclosures

PIPELINE SERIES

**CERTIFIED DISTRIBUTOR** Glaz-Tech Industries gives you the option to purchase inventoried product or build your own packages.

### ADVANTAGES OF ALUMAX BATH ENCLOSURES

The aesthetic look of a finished product is key. Alumax's longevity of hardware and array of styles in which to choose from ensures both the sustainability and beautifully designed bath enclosure. Factor that in with Glaz-Tech's fabricated glass product and take full advantage of faster lead-times, textured glass options, and an end product that truly defines the word, *Customized Bath Enclosures*.

### PRODUCT AVAILABILITY

- Classic Series
- Designer Series
- Pipeline Series
- StikStall™ ( Build Your Own )
- Framed / Semi- Frameless Sliders
- Pivot & Continuous Shower Hinges
- KD - Chrome / Brushed Nickel / Oil Rubbed Bronze



StikStall™ - Build Your Own

Image(s) courtesy of Alumax Bath Enclosures



**FABRICATION & ORDERING SYSTEM**

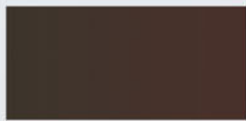
With Glaz-Tech's high output and long line of new and improving products we offer you not only the best customer support but very competitive pricing. A combination of Glaz-Tech's custom sized fabricated glass and Alumax's beautifully designed hardware you no longer have to do your own deductions. Simply send Glaz-Tech the opening dimensions and color of metal and watch the rest unfold. Glaz-Tech's new shower enclosure line makes for better product and a smooth transition when placing an order.

Glaz-Tech's fully functional ordering system makes it easier to process without leaving any important information, dimension or hardware left unnoticed. Glaz-Tech also offers different enclosure configurations such as 'Neo-Angle', 'Buttress-Return' and 'Inline-Buttress Return' to mention a few to accommodate the design of your shower enclosure.

**HARDWARE FINISH AVAILABILITY**



Brushed Nickel



Oil Rubbed Bronze



Chrome - Silver



**300 C Series Frameless Continuous Hinge Shower Door**  
Image(s) courtesy of Alumax Bath Enclosures

**ENGINEERED FOR EASE OF INSTALLATION, SAFETY, LEAK PREVENTION, AND OVERALL DURABILITY - ALUMAX BATH ENCLOSURES**



StikStall™ Shower Door Models



Pivot & Hinge Shower Door Models



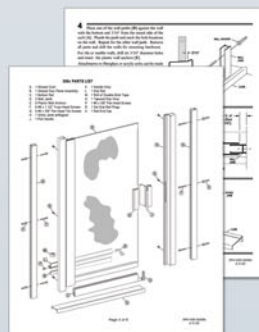
Sliding Shower Door Models

**GLAZ-TECH INDUSTRIES, A LOCAL FABRICATOR WITH ENDLESS GLASS CAPABILITIES & COMPLETE HARDWARE SOLUTIONS.**



**POINT OF PURCHASE DISPLAYS AVAILABLE FOR ALL STANDARD ALUMAX PRODUCTS.**

Image(s) courtesy of Alumax Bath Enclosures



Other Alumax Designer Series and hardware can be made upon request.

Alumax Bath Enclosure products come with easy to read measuring instructions & product specifications.